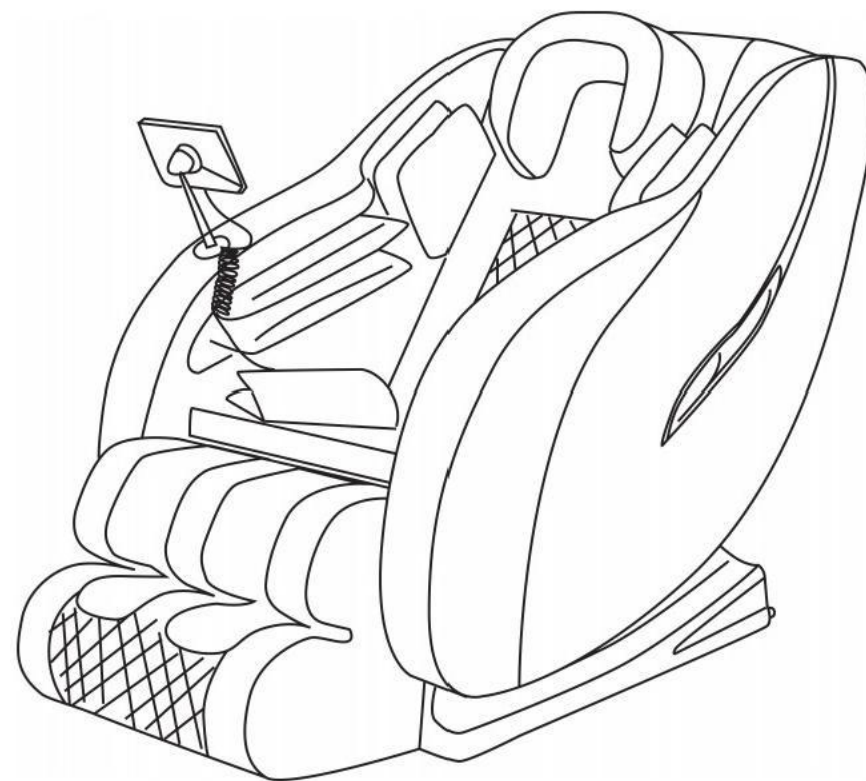


# Luxury Massage Chair

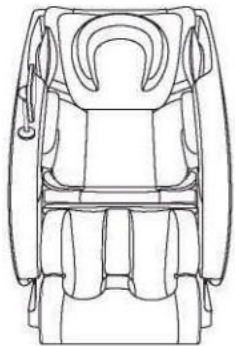
Instruction

Manual

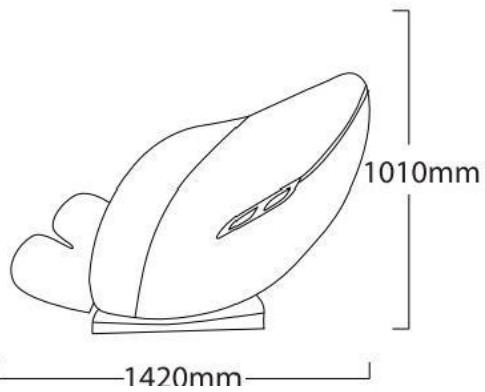


## Product Specifications

Product Name	Luxury Massage Chair
Rated Voltage	AC220V-60Hz
Rated Power	110 W
Gross Weight	66 KGS



760 mm



## Contents

Safety Precautions .....	2
Chair Overview .....	3
Unpacking and Installation .....	3
Installation .....	4
Moving the Chair .....	5
Controller Manual .....	6
Controller Buttons Description .....	7
Product Specifications .....	8

## Safety Precautions

■ Don't insert any articles or inflammable articles into this product, It may Lead to electric shock, malfunction or fire.

■ Please stop massage immediately if you feel any uncomfortable during massage.

■ Please don't cover this product to avoid excessive temperature and lead to malfunction or fire when using this product.

■ This product is not for self-diagnosis or treatment: if need diagnosis or treatment, it should be handled by professional medical personnel.

■ If you at the stage of taking medicine, please consult your doctor before using this product, Don't use this product if you feel unwell or you are pregnant.

When you are pregnant or in your period, please consult your doctor first and follow your doctor's advice.

■ The recommended use time is 15-30 minutes. Before reusing, please make sure that this product has been disconnected and stopped using for more than 10 minutes.

■ If it is used continuously for a Long period of time, it may start that overheating protection device and automatically to cut off the power A Caution.

■ Avoid using this product after drinking or when you are unwell.

■ Don't massage for head, elbow, knee, chest and abdomen, etc directly, If the liquid is spilled or dumped on this product carelessly, please remove the power plug from the socket immediately.

■ When your hands are wet, don't insert or pull out the power plug. Don't operate this product when the power line is damaged, which may lead to accidental electric shock or mechanical failure. The Situation Inappropriate to Using.

If the following situation occurs, please turn off the switch immediately, cut off the power supply and contact our company.

Sprinkle water on this product carelessly .which may lead to electric shock. The jacket of this product is damaged and the internal parts are exposed.

■ If abnormal or severe pain occurs during massage, please stop massage immediately and seek medical advice.

■ Discover any malfunction or abnormal condition in using, please stop using immediately.

■ In the case of interruption of current in using, please pay attention to avoid injuries caused by sudden recovery of electricity.

When Lightning occurs.

## Controller Buttons Description

1. **Power:** Press this button to turn on or off the massage chair.

2. Five auto massage programs:

**Knead mode:** Press it to start kneading on neck and the upper back, airbags massage and foot roller massage.

**Tuina mode:** Press it to start massage on the lower back, airbags massage and foot roller massage.

**Strong mode:** neck and back massage under strong intensity, full body airbag massage and foot roller massage.

**Leisure mode:** neck and back massage under medium intensity, full body airbag massage and foot roller massage.

**Sleep mode:** neck and back massage under weak intensity, full body airbag massage and foot roller massage.

3. **Airbags:** Press it to turn on or off the full body airbags.

4. **Shoulder Arms:** Press it to turn on or off the airbags on the shoulders and arms.

5. **Head Hips:** Press it to turn on or off the airbags on the head and hips.

6. **Legs:** Press it to turn on or off the airbags on the legs.

7. **Air Pressure:** Press it to adjust the airbag intensity among three levels.

8. **Bluetooth:** Turn on or off the Bluetooth music.

Search for Bluetooth: KYN-Q168 Password: 8888.

9. **Manual:** 4 manual modes.

10. **Zero:P**ress it to turn on or turn off the zero gravity function.

11. **Speed+** :To increase the speed of the back massage.

**Speed-**: To reduce the speed of the back massage.

12. **.Foot Hips:** To turn on or off the hip vibration massage.

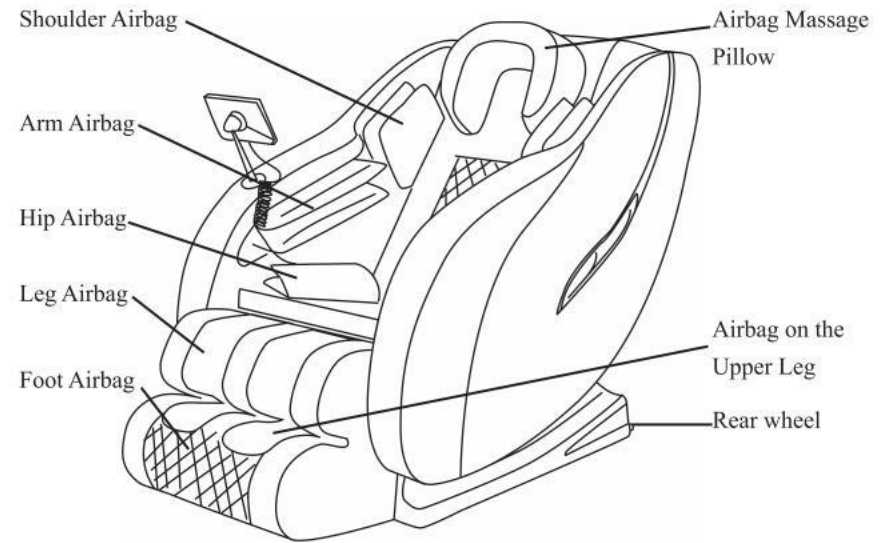
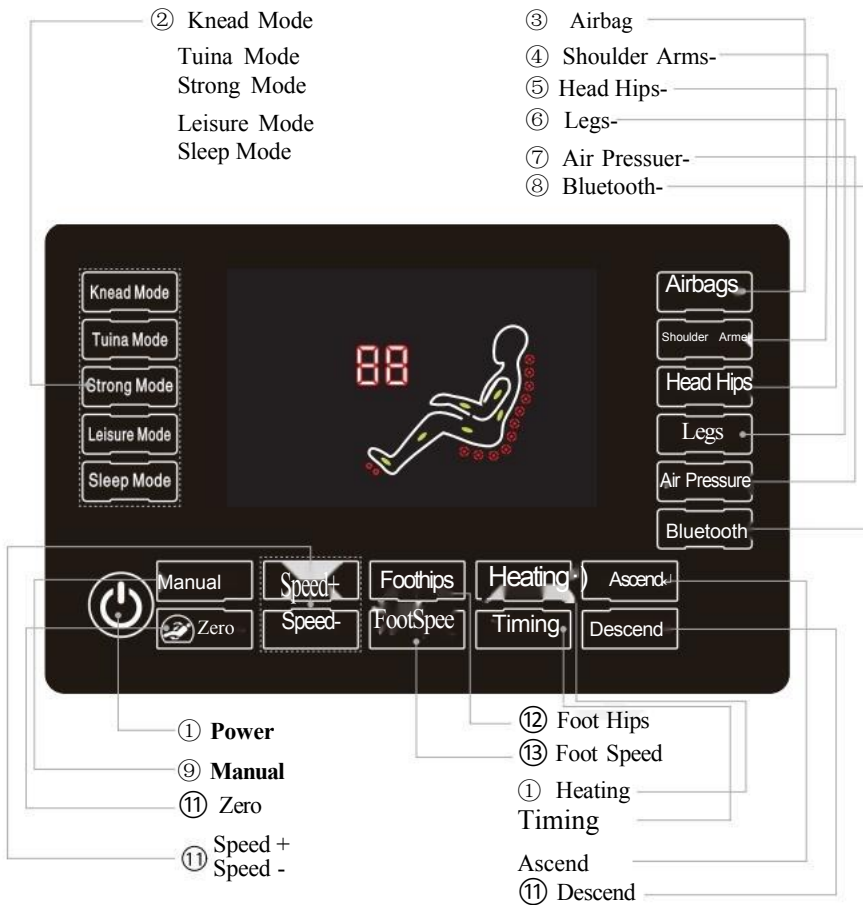
13. **Foot Speed:** Adjust the foot roller speed from level 1 to level 3 and turn off the foot roller.

14. **Heating:** Turn on or off the heating function on the back.

15. **Timing:** The default time is 15 minutes, it can be manually adjusted from 5,10,15,20, 25, to 30 minutes.

16. **Ascend:** Long press the button, the backrest will rise up and the calf will go down.

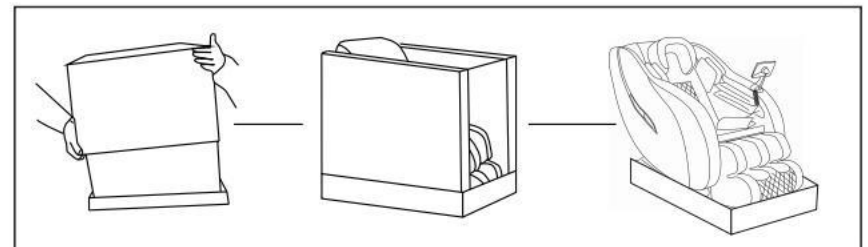
17. **Descend:** Long press the button, the backrest will go down and the calf will rise up.



### Unpacking and Installation

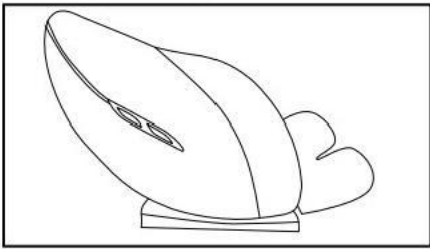
Remove the outer packaging carefully

The outer box is lifted up Remove around



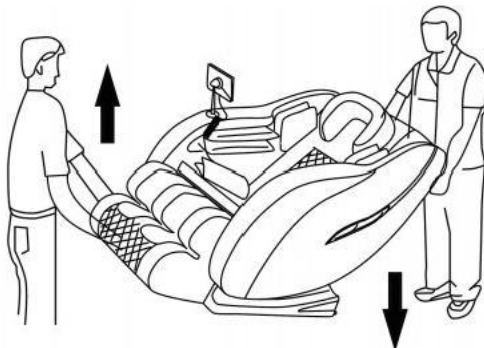
## Unpacking and Installation

Position the Massage Chair



- Carefully lift the massage chair out of the base carton and place in the desired Location
- When positioning the massage chair be sure to Leave 15cm space at the back of the chair and 15cm space in front of the chair so that the legs and backrest can be reclined and raised without contacting walls or other items.
- Do not place the power cord in the electric control box at the rear of the chair  
Check to ensure the cord is not under the massage chain  
Attach the power cord to the socket at the back of the Chair and plug into the mains.

## Moving the Chair



## Safety Precautions



Attention:

- Do not use in a wet area such as bathrooms or saunas.
- Place the chair on a flat, non-slippery surface.
- Do not place in direct sunlight or other hot or dusty Locations.